

Parts List

SL2.090 / SL2.180

Plate Screw (x2)
UMB10150030 (SL2.090)
UMB12175030 (SL2.180)

Guide Rail (x2)
SB75M____ (SL2.090)
SR75M____ (SL2.180)
stroke

Upper Mount
SB553267 (SL2.090)
SR553379 (SL2.180)

Lower Mount
SB553266 (SL2.090)
SR553378 (SL2.180)

Mount Screw
UMB08125020 (SL2.090)
UMB08125020 (SL2.180)

Split OD Wire Ring
90.55.090 (SL2.090)
90.55.180 (SL2.180)

Micro Gas Spring
C.090.____.BK (SL2.090)
C.180.____.BK (SL2.180)
stroke

Rail Plate	SL2.090	SL2.180
M	SB56RM10	SR56RM12
E	SB56RE37	SR56RE50
M1	SB56CM10	SR56CM08
E1	SB56CE37	SR56CE31

*Bronze Bearing (x2)
SB403266 (SL2.090)
SR403378 (SL2.180)

*Snap Ring (x2)
SB853302 (SL2.090)
SR853379 (SL2.180)

*Dampening Device (x2)
SB453266 (SL2.090)
SR453378 (SL2.180)

Rod Retaining Screw
SB853267 (SL2.090)
SR853378 (SL2.180)

SL2.300

Plate Screw (x2)
160A1M

Guide Rail (x2)
SN75M____
stroke

Upper Mount
SN553586

Lower Mount
SN553585

Mount Screw (x4)
UMC08125016

Split OD Wire Ring
90.55.3.300

L.300 Gas Spring
L.300.____
stroke

Rail Plate	SL2.300
M	SN56RM12
E	SN56RE50
M1	SN56CM12
E1	SN56CE50

*Bearing Assembly (x2)

*Snap Ring (x2)
90.55.3.300

*Rod Retaining Screw (x2)
SN453585

Model	Repair Kit
SL2.090	SL2.RK.090 (25-125 mm stroke) SL2.RL.090 (150-200 mm stroke) Repair kit includes bearings with snap rings (2), dampening devices (2), a threadlocker capsule and a maintenance manual.
SL2.180	SL2.RK.180 (25-125 mm stroke) SL2.RL.180 (150-200 mm stroke) Repair kit includes bearings with snap rings (2), dampening devices (2), a threadlocker capsule and a maintenance manual.
SL2.300	SL2.RK.300 Repair kit includes bearing assemblies with snap rings (2), dampening devices (2), a threadlocker capsule and a maintenance manual.

*Included in repair kit

Valve Bleed Tool

90.360.4

Use the DADCO Valve Bleed Tool to slowly discharge the nitrogen gas spring to the desired pressure.



Load Cell

LC-090 (**Micro 90**)
LC-180 (**Micro 90**)
90.300.0300 (L.300)

Use the Load Cell with the Mini Test Stand or arbor press to determine the force. Request Bulletin #B07108 or #97B119G for additional information.



Quick and Easy Repair!

The SL2 Nitrogen Gas Spring Two Post Lifters are designed with DADCO's Micro (**Micro 90** / **Micro 180**) and Mini (L.300) gas springs for adjustable lifting force and easy repair. The gas spring may be replaced in a few simple steps!

A repair kit provides replacement parts needed to maintain the lifter. DADCO recommends replacing all parts provided in the repair kit at the same time. Replacement gas springs **Micro 90** and **Micro 180** are sold separately. The L.300 may be repaired with its own repair kit, 90.103.00300, sold separately.

Comprehensive Guide

This service manual is a step-by-step maintenance guide for DADCO's SL2 Nitrogen Gas Spring Two Post Lifters.

Proper repair requires careful examination of all component parts and replacement of any that are worn or damaged. All DADCO replacement parts are available from factory stock.

After reviewing this maintenance guide, if you require any additional training or have any questions please contact DADCO for assistance.

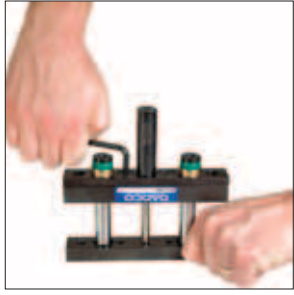
Note: The SL2 is labeled with a sticker that indicates the part number. The gas spring installed is permanently marked with model number and serial number. Please refer to these numbers when ordering replacement parts.

All DADCO bulletins and catalogs are available for download from our web site, www.dadco.net.



CAUTION: Always wear safety goggles when performing any maintenance work.

I. Easy Gas Spring Replacement!



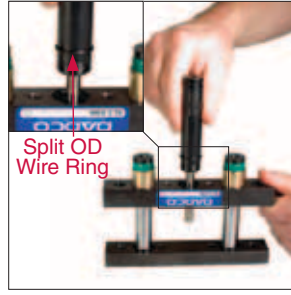
1. Remove the Mount Screws from the bottom of the lifter using an allen wrench. If necessary, wrap the SL2 in a soft cloth and clamp it in a vise.



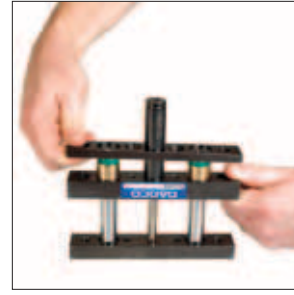
2. Pull the mount apart and slide the Lower Mount off the Gas Spring, (C.090.__.BK, C.180.__.BK or L.300.__). The L.300 gas spring may be repaired or replaced; refer to maintenance bulletin #B01103F for more information.



3. Slide the Gas Spring out of the Upper Mount. If replacing or repairing the Gas Spring only, proceed to step 4. To continue maintenance of the SL2 with replacement parts from the repair kit, proceed to "II. Bearing Replacement" step 1.



4. Install the Gas Spring with Split OD Wire Ring, (sold separately), into the Upper Mount. To verify the force of the Gas Spring before installation, refer to the appropriate Load Cell Bulletin #B07108 or #97B119G.



5. Install the Lower Mount over the Gas Spring.



6. Install the Mount Screws using an allen wrench to the appropriate torque specification.

SL2.090	15 lb.-ft	20 N-m
SL2.180	15 lb.-ft	20 N-m
SL2.300	13 lb.-ft	18 N-m

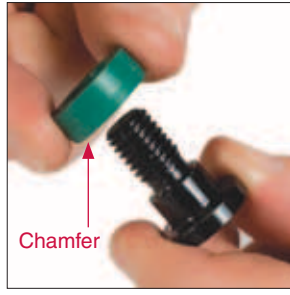
II. Bearing Replacement



1. Remove the two Rod Retaining Screws, (with Dampening Devices), from the bottom of the lifter using an allen wrench. If necessary, wrap the SL2 in a soft cloth and clamp it in a vise. If repairing a SL2.300 skip to step 4.



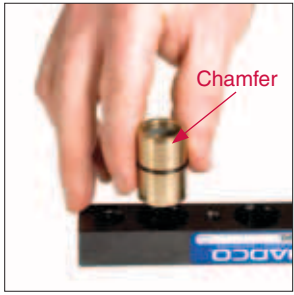
2. Remove the two Dampening Devices from the Rod Retaining Screws and discard.



3. Install the new Dampening Devices onto the screws with the chamfer side facing the screw head.



4. Remove the Upper Mount from the Guide Rails. Remove the Bearings with Snap Rings from the Upper Mount and discard.



5. Install the new Bearings with Snap Rings, into the Upper Mount. Make sure the bearings are positioned correctly with the chamfer facing away from the upper mount.

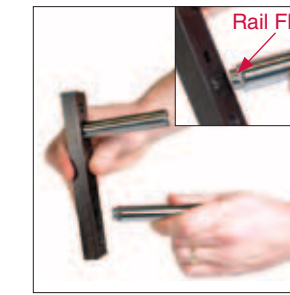
III. Guide Rod Removal



1. Clean the Guide Rails attached to the Rail Plate, and inspect the surface for deformation. If the Guide Rails are damaged they must be replaced, proceed to Step 2. If the Guide Rails do not need to be replaced proceed to "IV. Reassembly" step 1.



2. Remove the two Plate Screws from the Rail Plate using an allen wrench. Remove the two Guide Rails from the Rail Plate and discard. Inspect the Rail Plate and replace if damaged.



3. Install the new Guide Rails into the Rail Plate. Make sure that the Guide Rails are positioned correctly with the flats facing the long sides of the Rail Plate.



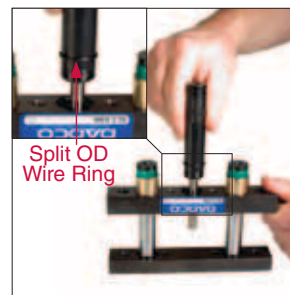
4. Install the two Plate Screws into the Rail Plate using an allen wrench to the appropriate torque specification.

SL2.090	25 lb.-ft	34 N-m
SL2.180	50 lb.-ft	68 N-m
SL2.300	110 lb.-ft	149 N-m

IV. Reassembly



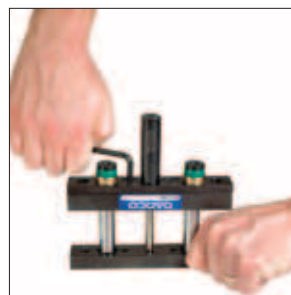
1. Install the Upper Mount with Bearings onto the Guide Rails. Add 2-3 drops of serviceable threadlocker to each rod retainer screw before installing. Tighten the two Rod Retaining Screws (with Dampening Devices) using an allen wrench to the appropriate torque specification.



2. Install the Gas Spring with Split OD Wire Ring into the Upper Mount. To verify the force of the Gas Spring before installation, refer to the Load Cell Bulletin #97B119G.

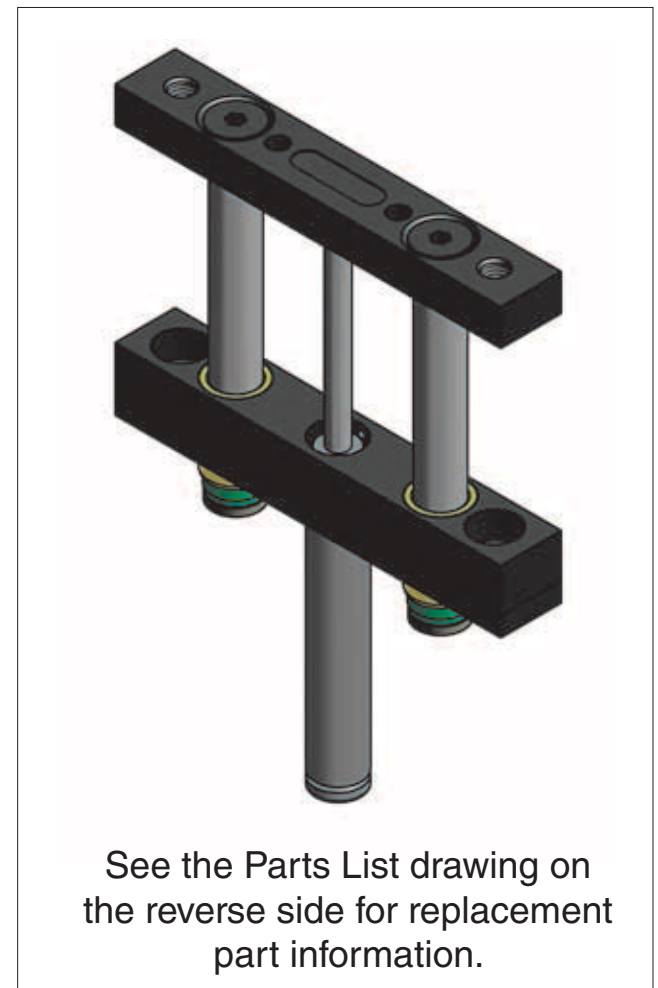


3. Install the Lower Mount over the Gas Spring.



4. Install the Mount Screws using an allen wrench to the appropriate torque specification.

SL2.090	15 lb.-ft	20 N-m
SL2.180	15 lb.-ft	20 N-m
SL2.300	13 lb.-ft	18 N-m



See the Parts List drawing on the reverse side for replacement part information.

SL2.090	25 lb.-ft	34 N-m
SL2.180	50 lb.-ft	68 N-m
SL2.300	110 lb.-ft	149 N-m